

Introduction to AMEC

June 2011

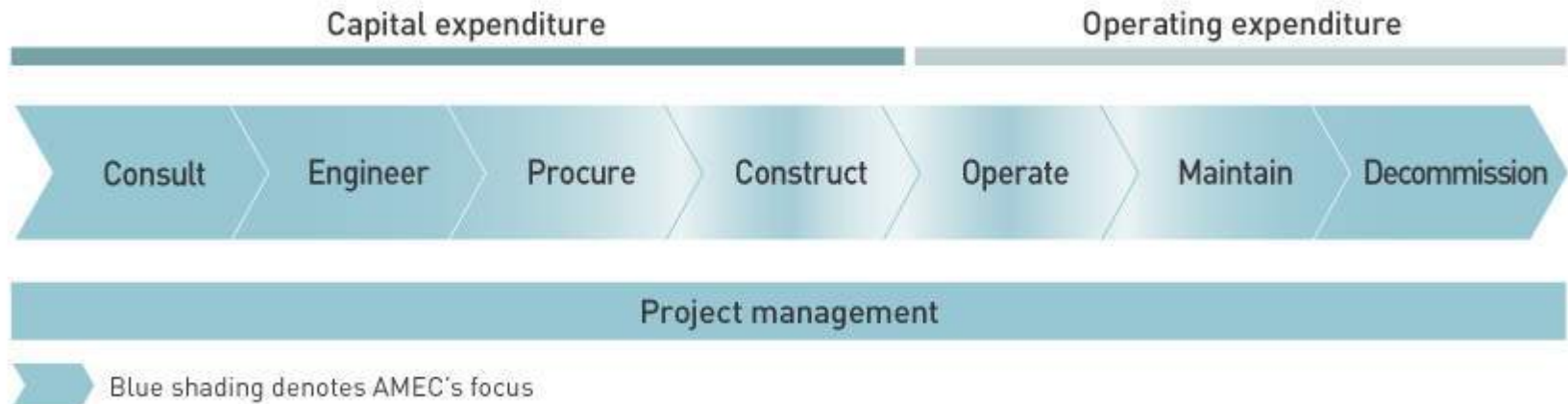


- FTSE 100 company
 - Revenues
 - Employees
 - Net cash at 31 December 2010
- Market cap* c.£3.9 billion**
- Almost £3 billion**
- c.25,000**
- £740 million**

Growing into Vision 2015

*As at the close, 13 May 2011

- Key services: consulting, engineering, project and construction management and supply chain management



Our mission is to be a leading supplier of consultancy, engineering and project management services to our customers in the world's oil and gas, minerals and metals, clean energy, environment and infrastructure markets



- We are **sector leader** for sustainability in the oil equipment and services sector according to the worldwide **Dow Jones Sustainability Index (DJSI) 2010/11**
- We've been added to the **United Nations register of Global Compact** participants, in recognition of our increasingly global portfolio and our commitment to continuous sustainability performance improvements.

Vision 2015 sectors of focus

Oil & Gas

Oil & Gas
Unconventional Oil & Gas

Clean Energy

Nuclear
Renewables/Bioprocess
Power
Transmission & Distribution

Minerals & Metals

Minerals & Metals

Environment & Infrastructure

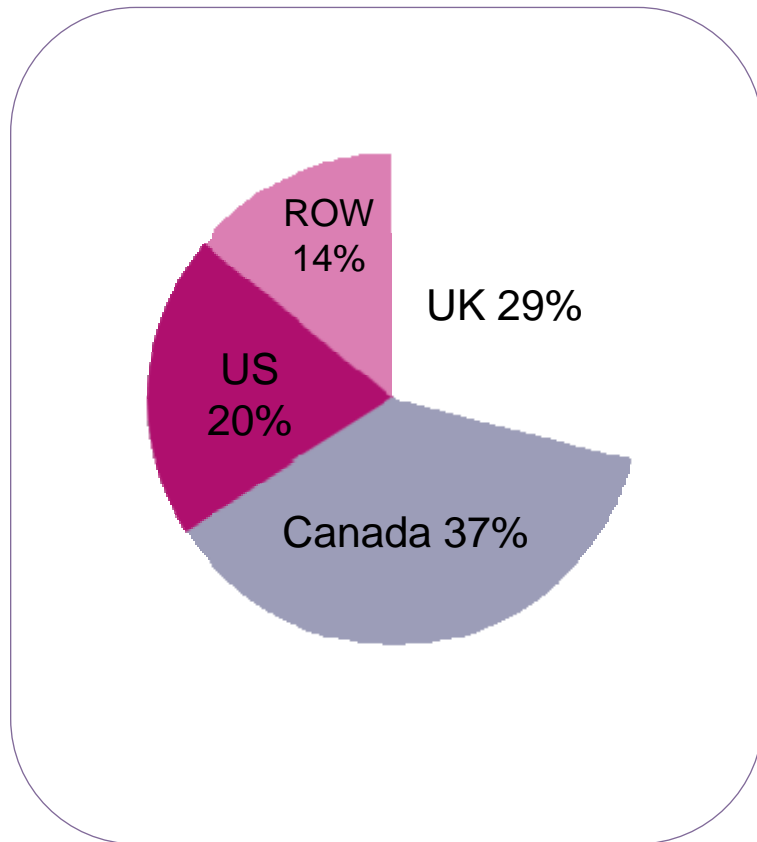
Water/Municipal
Transportation/Infrastructure
Government Services
Industrial/Commercial

Well positioned in high growth markets

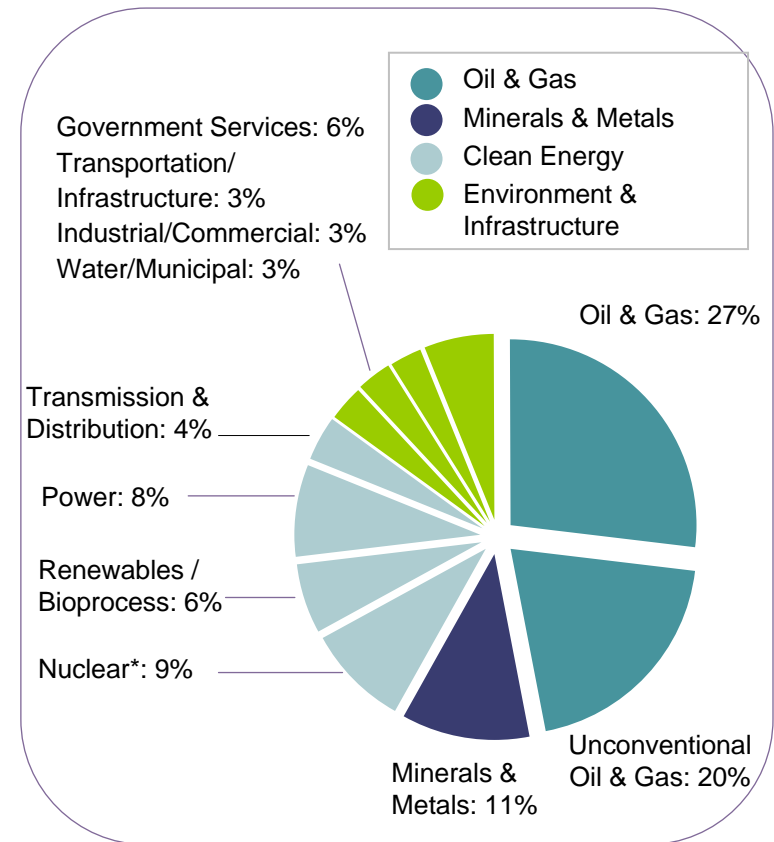
2010 revenue by geography/sectors



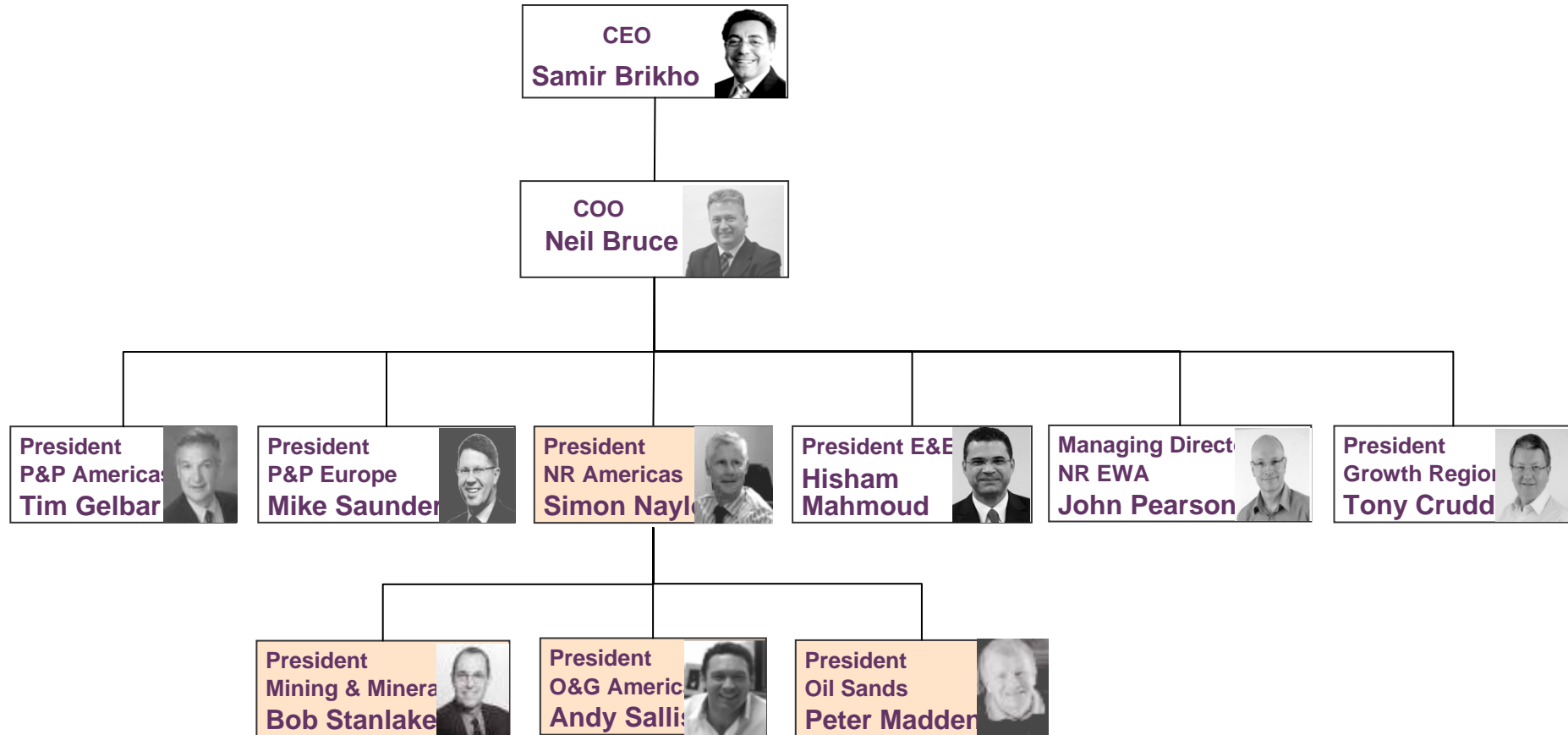
By geography



By sector



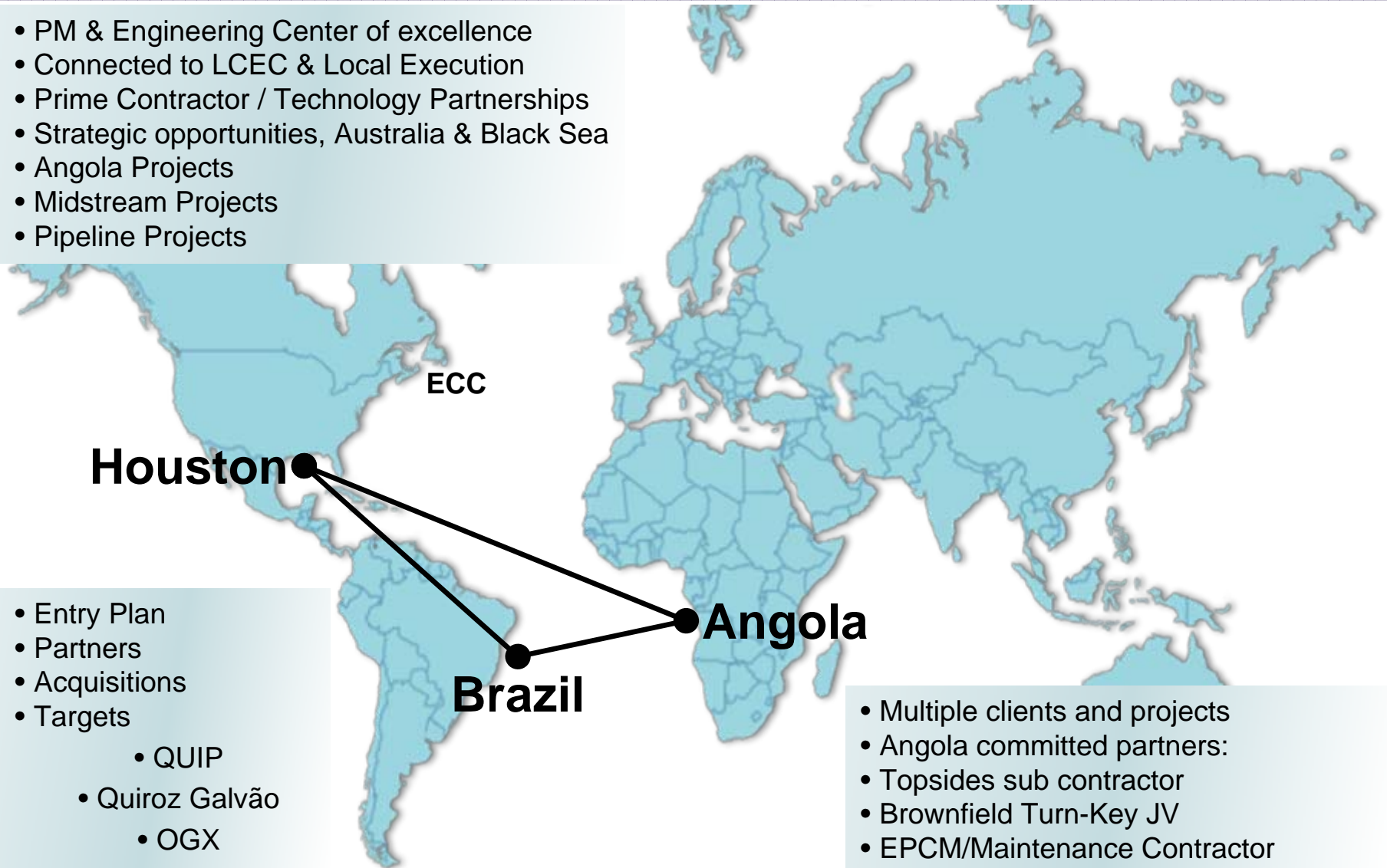
The new AMEC organization structure



AMEC Oil & Gas Americas Global Markets & Strategy



- PM & Engineering Center of excellence
- Connected to LCEC & Local Execution
- Prime Contractor / Technology Partnerships
- Strategic opportunities, Australia & Black Sea
- Angola Projects
- Midstream Projects
- Pipeline Projects



Houston

ECC

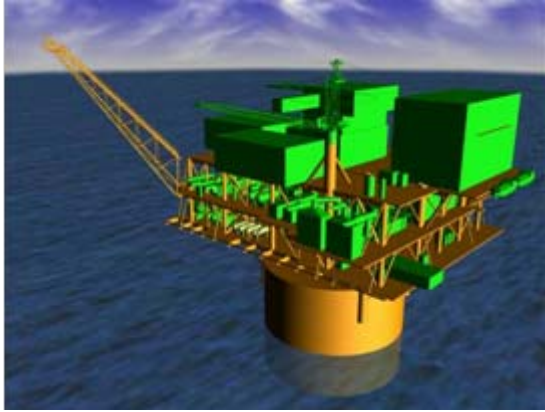
- Entry Plan
- Partners
- Acquisitions
- Targets
 - QUIP
 - Quiroz Galvão
 - OGX
 - Petrobras

Brazil

Angola

- Multiple clients and projects
- Angola committed partners:
- Topsides sub contractor
- Brownfield Turn-Key JV
- EPCM/Maintenance Contractor

Houston Project Portfolio



- 5,500Te Facilities
- 2,500Te Jacket
- 40,000hrs FEED
- 115,000hrs detail design

"The best engineering we have seen" JR Chung, SHI Project Manager

No Changes, No Claims, On Schedule Fully Operational

